

DX

GENERAL PURPOSE

CONFIGURED PANEL



Physical / Environmental

Operating Temperature Range	-18 °C – 50 °C (0 °F – 122 °F) *Heater in enclosure is required below -18 °C and 0 °F, de-rating required above 40 °C
Storage Temperature Range	-40 °C – 57 °C (-40 °F – 135 °F)
Enclosure	NEMA Type 3R: Outdoor Rainproof
Altitude	Derate by 1% every 400 ft above 3,300 ft elevation

Input Power

Input Phase	Single-phase or Three-phase
Input Voltage	230V 460V
Input Voltage Range	190V – 264V 440V – 520V
Input Frequency	50/60 Hz

Output Power

Output Phase	Three-phase
Nominal Output Voltage	230V 460V
Output Voltage Range	100V – 270V 200V – 530V
Output Frequency	5 Hz – 120 Hz
Horsepower	5 HP - 500 HP
Output Power	1.5 - 409 kW
Switching Frequency	2 kHz – 5 kHz
Output	V/f control or torque Control (Optional)

Electrical

Short Circuit Withstand Rating	65 kA RMS symmetrical Amps
Efficiency	> 98%
Startup Ramp Time	1 – 120 s
Shutdown Ramp Time	1 – 120 s or Coast to Stop
Overload Capacity	110% for 60 s



Analog Inputs

Quantity	(3) Programmable
Current Reference	4 – 20 mA, (2) Inputs
Voltage Reference	0 – 10 VDC, (1) Input
Terminal Block Size	26 - 12 AWG

Digital Inputs

Quantity	(4) Programmable
Ratings	< 5 V, galvanically isolated
Terminal Block Size	26 - 12 AWG

Relay Outputs

Quantity	(4) Programmable
Rating	Relay 1 : 30 VDC or 277 VAC, 10 A Relay 2 : 30 VDC or 277 VAC, 10 A Relay 3 : 30 VDC, 2 A or 125 VAC, 0.5 A Relay 4 : 30 VDC, 2 A or 125 VAC, 0.5 A
Terminal Block Size	26 - 12 AWG

Features

Certification	ETL listed to UL 61800-5-1 and CSA C22.2 No. 274-17
User Interface	Push button membrane keypad with backlit graphic display



230V

230 V

<i>Model / Part Number</i>	<i>HP</i>	<i>Rated Current (Input)</i>	<i>Rated Current (Output)</i>	<i>Enclosure</i>	<i>Enclosure (w/ Bypass)</i>
DX005	5	18 A	18 A	ENC2	-
DX007	7.5	24 A	24 A	ENC2	-
DX010	10	31 A	31 A	ENC2	-
DX015	15	46 A	46 A	ENC2	-
DX020	20	61 A	61 A	ENC2	-
DX025	25	75 A	75 A	ENC2	-
DX030	30	91 A	91 A	ENC2	-



460V

460 V

Model / Part Number	HP	Rated Current (Input)	Rated Current (Output)	Enclosure	Enclosure (w/ Bypass)
DX405	5	9 A	9 A	ENC2	-
DX407	7.5	13 A	13 A	ENC2	-
DX410	10	18 A	18 A	ENC2	-
DX415	15	25 A	25 A	ENC2	-
DX420	20	31 A	31 A	ENC2	ENC4A
DX425	25	38 A	38 A	ENC2	ENC4A
DX430	30	46 A	46 A	ENC2	ENC4A
DX440	40	61 A	61 A	ENC2	ENC4A
DX450	50	77 A	77 A	ENC3	ENC4A
DX460	60	91 A	91 A	ENC3	ENC4A
DX475	75	101 A	107 A	ENC4A	ENC6
DX4100	100	134 A	142 A	ENC4A	ENC6
DX4125	125	163 A	172 A	ENC4A	ENC6
DX4150	150	188 A	198 A	ENC4A	ENC6
DX4200	200	237 A	250 A	ENC4A	ENC6
DX4250	250	388 A	304 A	ENC4A	ENC6
DX4300	300	346 A	362 A	ENC6	-
DX4350	350	394 A	415 A	ENC6	-
DX4400	400	454 A	478 A	ENC6	-
DX4500	500	560 A	590 A	ENC6	-



230V

230V	Model / Part Number	HP	Fuse Rating (Recommended)	Circuit Breaker Rating (Recommended)
	DX005	5	20 A, 600 V	20 A
	DX007	7.5	30 A, 600 V	30 A
	DX010	10	40 A, 600 V	40 A
	DX015	15	60 A, 600 V	60 A
	DX020	20	80 A, 600 V	80 A
	DX025	25	100 A, 600 V	100 A
	DX030	30	125 A, 600 V	125 A

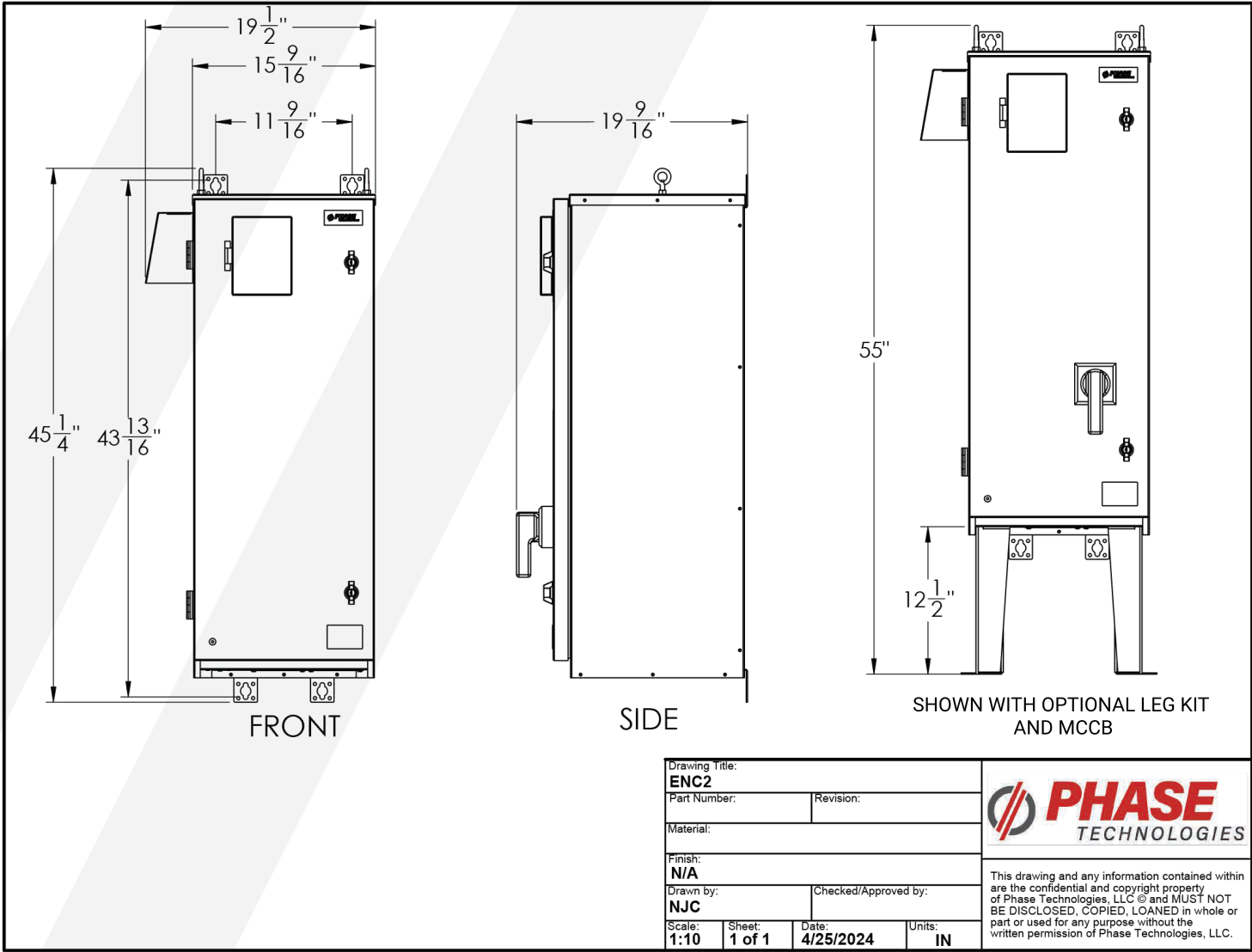


460V

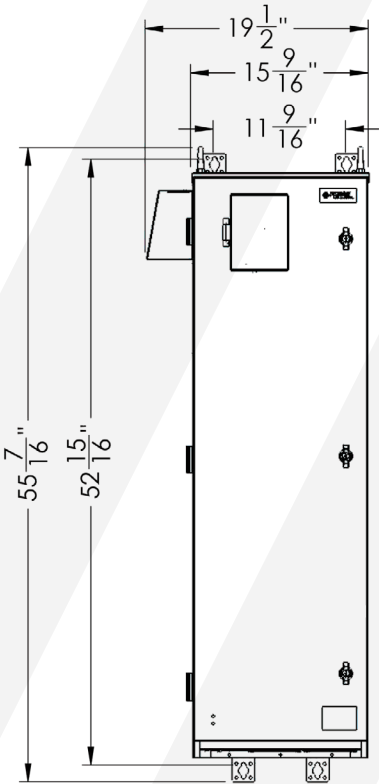
460V	Model / Part Number	HP	Fuse Rating (Recommended)	Circuit Breaker Rating (Recommended)
	DX405	5	20 A, 600 V	20 A
	DX407	7.5	20 A, 600 V	20 A
	DX410	10	30 A, 600 V	30 A
	DX415	15	30 A, 600 V	30 A
	DX420	20	40 A, 600 V	40 A
	DX425	25	50 A, 600 V	50 A
	DX430	30	60 A, 600 V	60 A
	DX440	40	80 A, 600 V	80 A
	DX450	50	100 A, 600 V	100 A
	DX460	60	125 A, 600 V	125 A
	DX475	75	150 A, 600 V	150 A
	DX4100	100	200 A, 600 V	200 A
	DX4125	125	225 A, 600 V	225 A
	DX4150	150	250 A, 600 V	250 A
	DX4200	200	350 A, 600 V	350 A
	DX4250	250	400 A, 600 V	400 A
	DX4300	300	500 A, 600 V	500 A
	DX4350	350	600 A, 600 V	600 A
	DX4400	400	700 A, 600 V	700A
	DX4500	500	800 A, 600 V	800 A



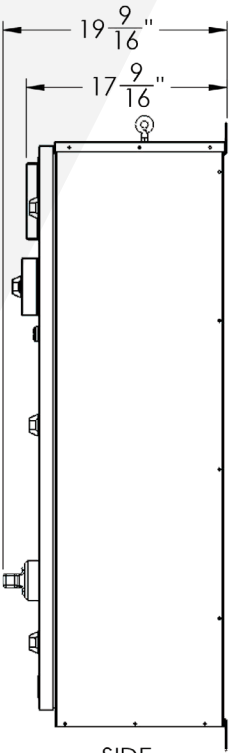
ENC2



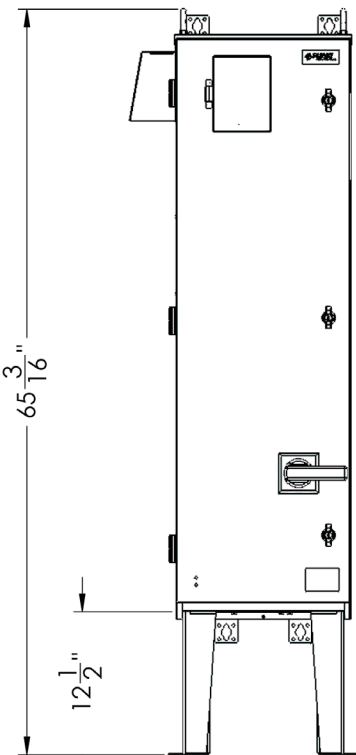
ENC3



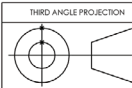
FRONT



SIDE



SHOWN WITH OPTIONAL LEG KIT
AND MCCB



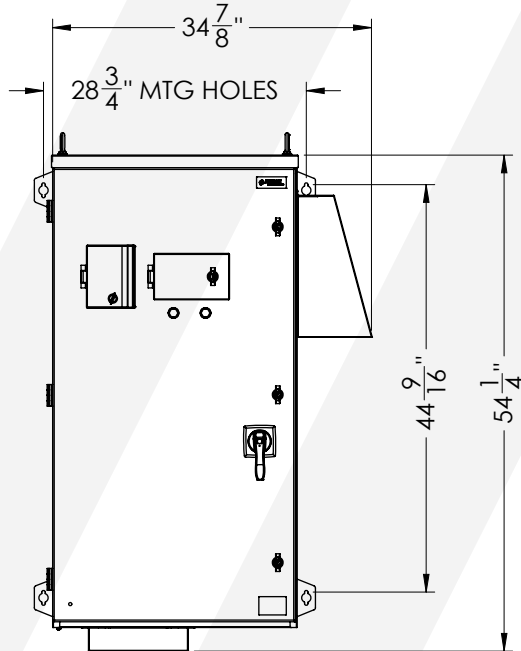
Drawing Title: ENC3			
Part Number:		Revision: 0	
Material: N/A			
Finish: N/A			
Drawn by: OH		Checked/Approved by:	
Scale: N/A	Sheet: 1 of 1	Date: 12/18/2023	Units: IN



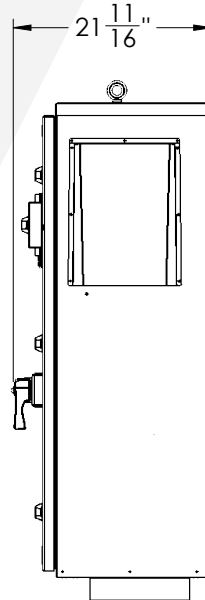
This drawing and any information contained within are the confidential and copyright property of Phase Technologies, LLC © and MUST NOT BE DISCLOSED, COPIED, LOANED in whole or part or used for any purpose without the written permission of Phase Technologies, LLC.



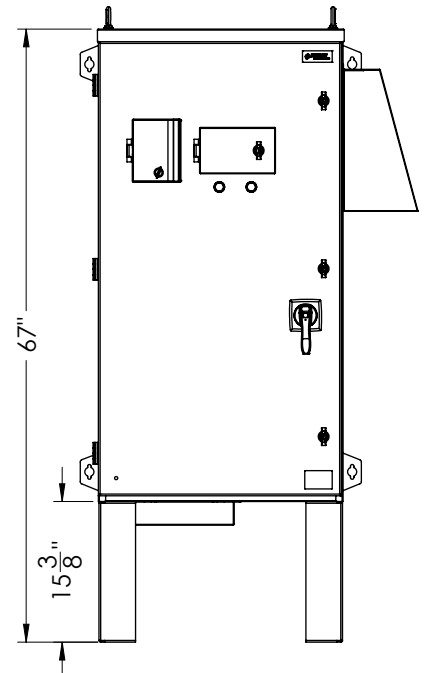
ENC4A



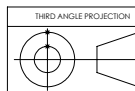
FRONT



SIDE



OPTIONAL LEG KIT



UNLESS OTHERWISE SPECIFIED:
 NO DIM. ± 0.060 " TO MODEL
 FRACTIONAL $\pm 1/16$ "
 0.XX: ± 0.06 " 0.XXX: ± 0.020 "
 ANGLES: $\pm 1^\circ$
 HOLE \varnothing : ± 0.003 " TO MODEL
 HOLE \oplus : ± 0.010 " TO MODEL
 WELD: ANSI STANDARD

MASS = 0.000lb

Drawing Title:

ENC4A Standard Enclosure

Part Number:

Revision:

0

Material:

Finish:

N/A

Drawn by:

Checked/Approved by:

JLT

Scale:

1:15

Sheet:

1 of 1

Date:

11/26/2024

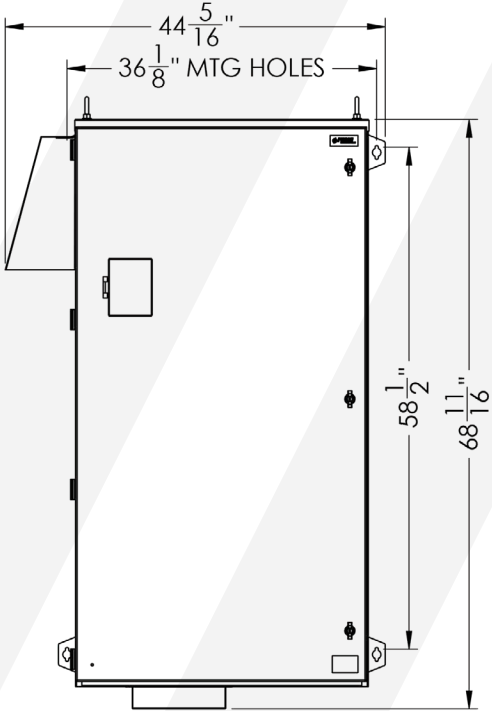
Units:

IN

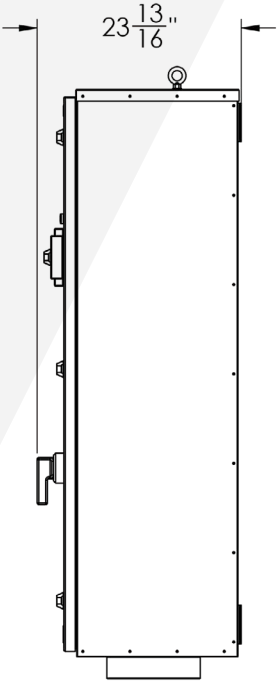

This drawing and any information contained within are the confidential and copyright property of Phase Technologies, LLC © and MUST NOT BE DISCLOSED, COPIED, LOANED in whole or part or used for any purpose without the written permission of Phase Technologies, LLC.



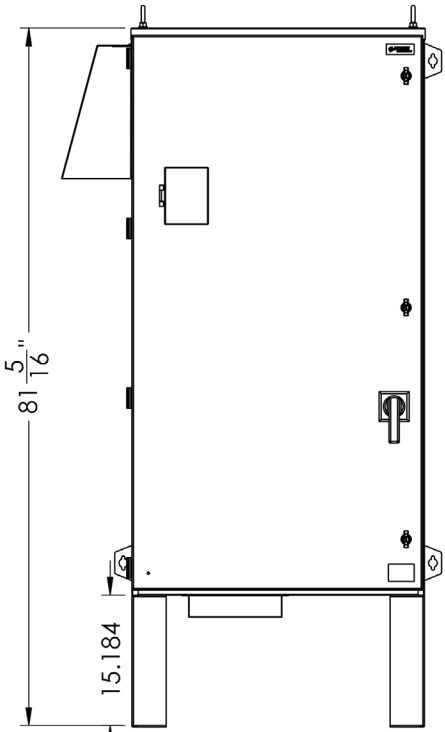
ENC5



FRONT



SIDE



SHOWN WITH OPTIONAL LEG KIT
AND MCCB

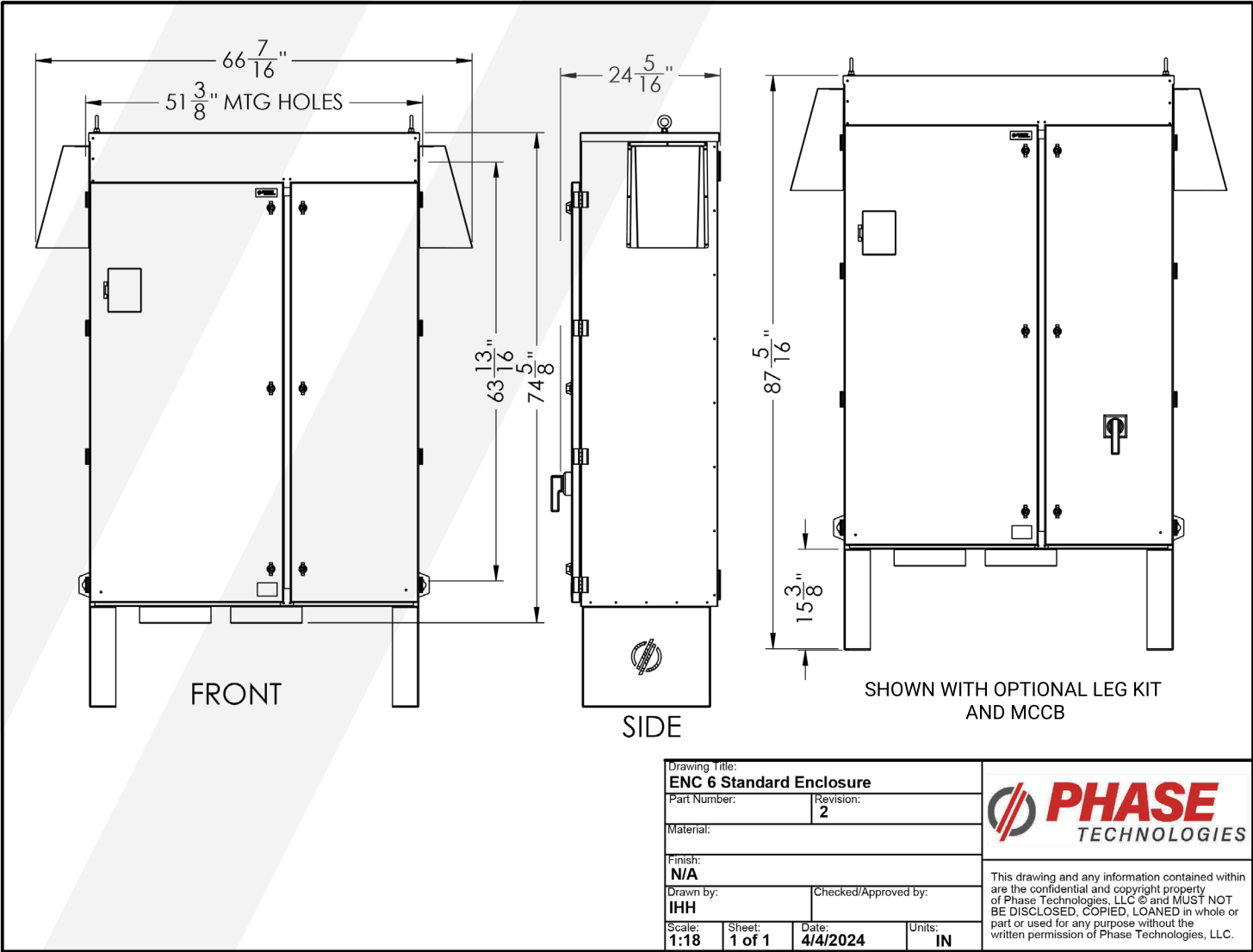
Drawing Title: ENC 4, ENC 5 Standard Enclosures			
Part Number:		Revision: 1	
Material:			
Finish: N/A			
Drawn by: IHH		Checked/Approved by:	
Scale: 1:16	Sheet: 1 of 1	Date: 2/29/2024	Units: IN



This drawing and any information contained within are the confidential and copyright property of Phase Technologies, LLC © and MUST NOT BE DISCLOSED, COPIED, LOANED in whole or part or used for any purpose without the written permission of Phase Technologies, LLC.



ENC6



INTUITIVELY ENGINEERED



**DIGITAL PHASE
CONVERTERS**

**VARIABLE
FREQUENCY
DRIVES**

**MOTOR
PROTECTION**

**STARTER
PANELS**

OUR MISSION

Relentlessly seek to provide Uncommon Value, solutions, innovation, and support for the industries that we serve.



PhaseTechnologies.com

